



# Roxtec ComSeal™

IP 55 -luokitellut läpivientitiivisteet alumiinikehyksellä.

Roxtec ComSeal™ -tiiviste on IP 55 -luokiteltu ja saatavana joko alumiinikehyksellä tai AISI 316-teräskehysellä. Läpivientä on saatavana kuutta eri kokoa, joihin sopii jopa 32 kaapelia.



- Jyrsijäsuojattu
- Korroosiosuojattu
- Kevyt
- Tilatehokas

## Tuotteen ominaisuudet



IP/UL NEMA

## Asennusrakenne



Kaapit ja kotelot

## Asennustyyppi



Pulttaus

## Luokitukset ja sertifiointit

### Tiiviys

- IP 55, UL/NEMA 3,12,12K

## Kehyksen mitat

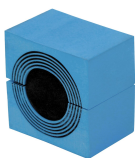
mm/kg

Alla olevat kehysvaihtoehdot ovat vain osa valikoimastamme. Kattava valikoima kehyksiä ja kokoonpanoja löytyy osoitteesta [roxtec.com](https://www.roxtec.com).

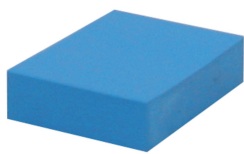
Otsikko	Kehysaukot	Pakkaustila	Ulkomitat WxHxD	Aukon mitat w x h	Paino	Tuoteno
COMSEAL 10 FRAME ASSEMBLY	1	40 x 100	80.5 x 173 x 55	56(+1/-1) x 149(+1/-1)	0.34	105300

## Tiivistyskomponenttien tiedot

### Tiivistyskomponentit



CM -moduuli  
Multidiameter™-teknologialla



CM -umpimoduuli umpinaisena



Roxtec-asennusgeeli

Lisätietoja on osoitteessa [roxtec.com](https://www.roxtec.com).



# Valmiiksi määritetyt läpivientisarjat

mm/kg



ComSeal 12/3



ComSeal 10/4



ComSeal 10/7



ComSeal 10/10



ComSeal 12/6



ComSeal 12/9



ComSeal 12/12



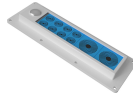
ComSeal 15/3



ComSeal 16/4



ComSeal 16/7



ComSeal 16/10



ComSeal 16/16



ComSeal 30/6



ComSeal 32/8



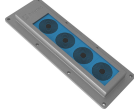
ComSeal 32/14



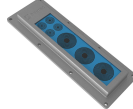
ComSeal 32/20



ComSeal 32/32



ComSeal 16/4 AISI316



ComSeal 16/7 AISI316



ComSeal 16/10 AISI316

Otsikko	Kokoonpano	Ulkomitat W x H x D	Aukon mitat w x h	Paino	Tuotenumero
ComSeal 12/3	3x (9.5-32.5)	88 x 216 x 55	56(+1/-1) x 169(+1/-1)	0.8	105303
ComSeal 10/4	2x (9.5-32.5), 2x (3.5-16.5)	80.5 x 173 x 55	56(+1/-1) x 149(+1/-1)	0.6	105299
ComSeal 10/7	6x (3.5-16.5), 1x (9.5-32.5)	80.5 x 173 x 55	56(+1/-1) x 149(+1/-1)	0.6	105301
ComSeal 10/10	10x (3.5-16.5)	80.5 x 173 x 55	56(+1/-1) x 149(+1/-1)	0.6	105302
ComSeal 12/6	2x (9.5-32.5), 4x (3.5-16.5)	88 x 216 x 55	56(+1/-1) x 169(+1/-1)	0.8	105305
ComSeal 12/9	8x (3.5-16.5), 1x (9.5-32.5)	88 x 216 x 55	56(+1/-1) x 169(+1/-1)	0.8	105306
ComSeal 12/12	12x (3.5-16.5)	88 x 216 x 55	56(+1/-1) x 169(+1/-1)	0.8	105307
ComSeal 15/3	3x (28.0-44.0)	90.5 x 223 x 55	61(+1/-1) x 195(+1/-1)	0.9	105308
ComSeal 16/4	4x (9.5-32.5)	80.5 x 233 x 55	56(+1/-1) x 209(+1/-1)	0.8	105310
ComSeal 16/7	3x (9.5-32.5), 4x (3.5-16.5)	80.5 x 233 x 55	56(+1/-1) x 209(+1/-1)	0.8	105312
ComSeal 16/10	2x (9.5-32.5), 8x (3.5-16.5)	80.5 x 233 x 55	56(+1/-1) x 209(+1/-1)	0.8	105313
ComSeal 16/16	16x (3.5-16.5)	80.5 x 233 x 55	56(+1/-1) x 209(+1/-1)	0.8	105314
ComSeal 30/6	6x (28.0-44.0)	155 x 231 x 55	120(+1/-1) x 195(+1/-1)	1.6	105315
ComSeal 32/8	8x (9.5-32.5)	135 x 241 x 55	103(+1/-1) x 209(+1/-1)	1.4	105316
ComSeal 32/14	6x (9.5-32.5), 8x (3.5-16.5)	135 x 241 x 55	103(+1/-1) x 209(+1/-1)	1.4	105320
ComSeal 32/20	4x (9.5-32.5), 16x (3.5-16.5)	135 x 241 x 55	103(+1/-1) x 209(+1/-1)	1.4	105321
ComSeal 32/32	32x (3.5-16.5)	135 x 241 x 55	103(+1/-1) x 209(+1/-1)	1.4	105322
ComSeal 16/4 AISI316	4x (9.5-32.5)	81 x 233 x 33	58.5(+1/-1) x 211(+1/-1)	1.5	105679
ComSeal 16/7 AISI316	3x (9.5-32.5), 4x (3.5-16.5)	81 x 233 x 33	58.5(+1/-1) x 211(+1/-1)	1.5	105680
ComSeal 16/10 AISI316	2x (9.5-32.5), 8x (3.5-16.5)	81 x 233 x 33	58.5(+1/-1) x 211(+1/-1)	1.5	105681

The product information provided by Roxtec does not release the purchaser of the Roxtec system, or part thereof, from the obligation to independently determine the suitability of the products for the intended process, installation and/or use.

Roxtec gives no guarantee for the Roxtec system or any part thereof and assumes no liability for any loss or damage whatsoever, whether direct, indirect, consequential, loss of profit or otherwise, occurred or caused by the Roxtec systems or installations containing components not manufactured by an authorized manufacturer and/or occurred or caused by the use of the Roxtec system in a manner or for an application other than for which the Roxtec system was designed or intended.

Roxtec expressly excludes any implied warranties of merchantability and fitness for a particular purpose and all other express or implied representations and warranties provided by statute or common law. User determines suitability of the Roxtec system for intended use and assumes all risk and liability in connection therewith. In no event shall Roxtec be liable for indirect, consequential, punitive, special, exemplary or incidental damages or losses.

The Roxtec products are offered and sold in accordance with the conditions of the Roxtec General Terms of Sales. The latest version of the Roxtec General Terms of Sales can be downloaded from <https://www.roxtec.com/en/about-us/about-roxtec/general-terms-of-sales/>

We reserve the right to make changes to the product and technical information without further notice. Any errors in print or entry are no claims for indemnity. The content of this publication is the property of Roxtec International AB and is protected by copyright.

This document was generated on: 2024-04-19